



*FS-1050*  
*Laser Printer*

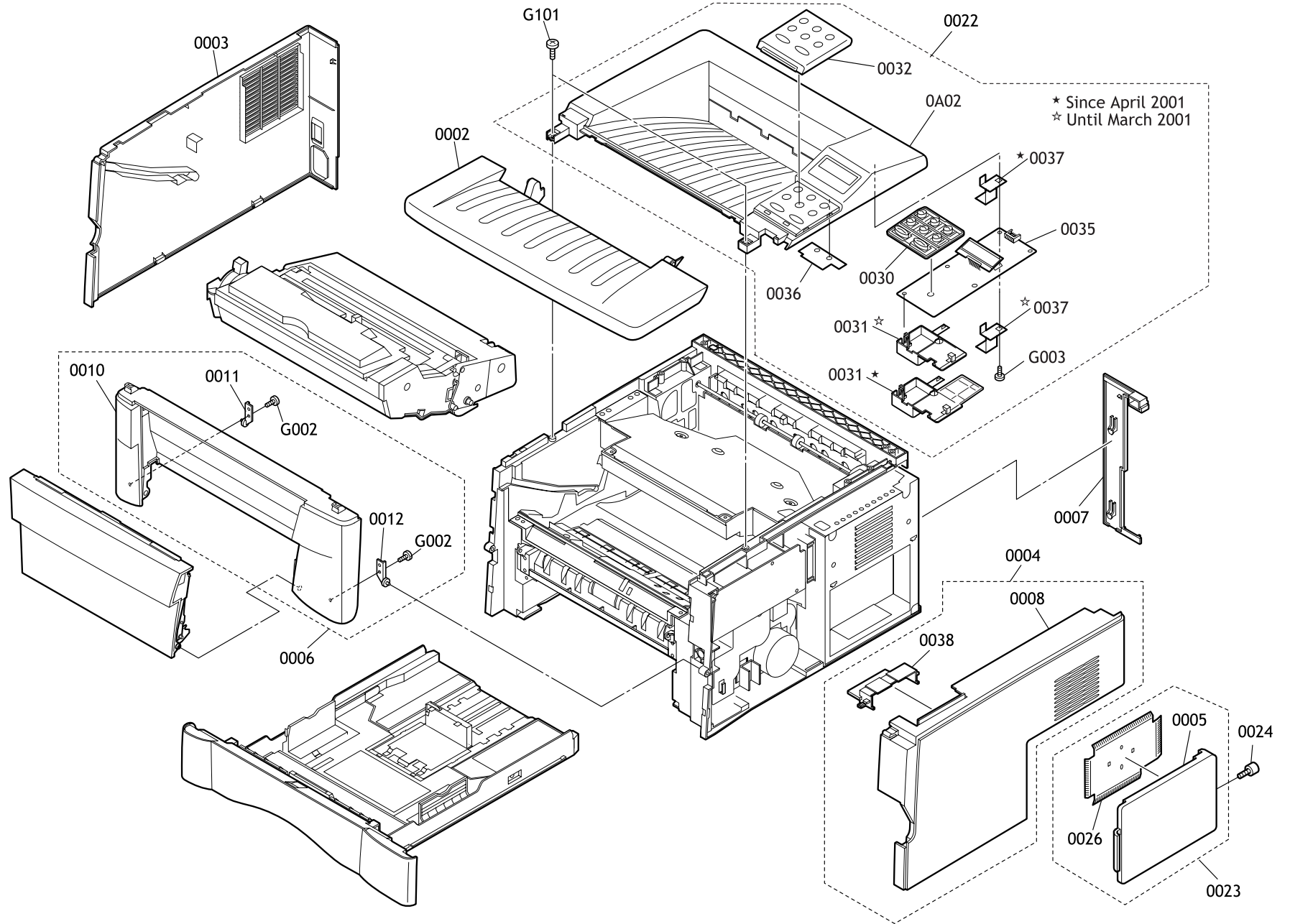
**PARTS LIST**

Published in Oct., 2001  
FS105070770  
842FS1050120

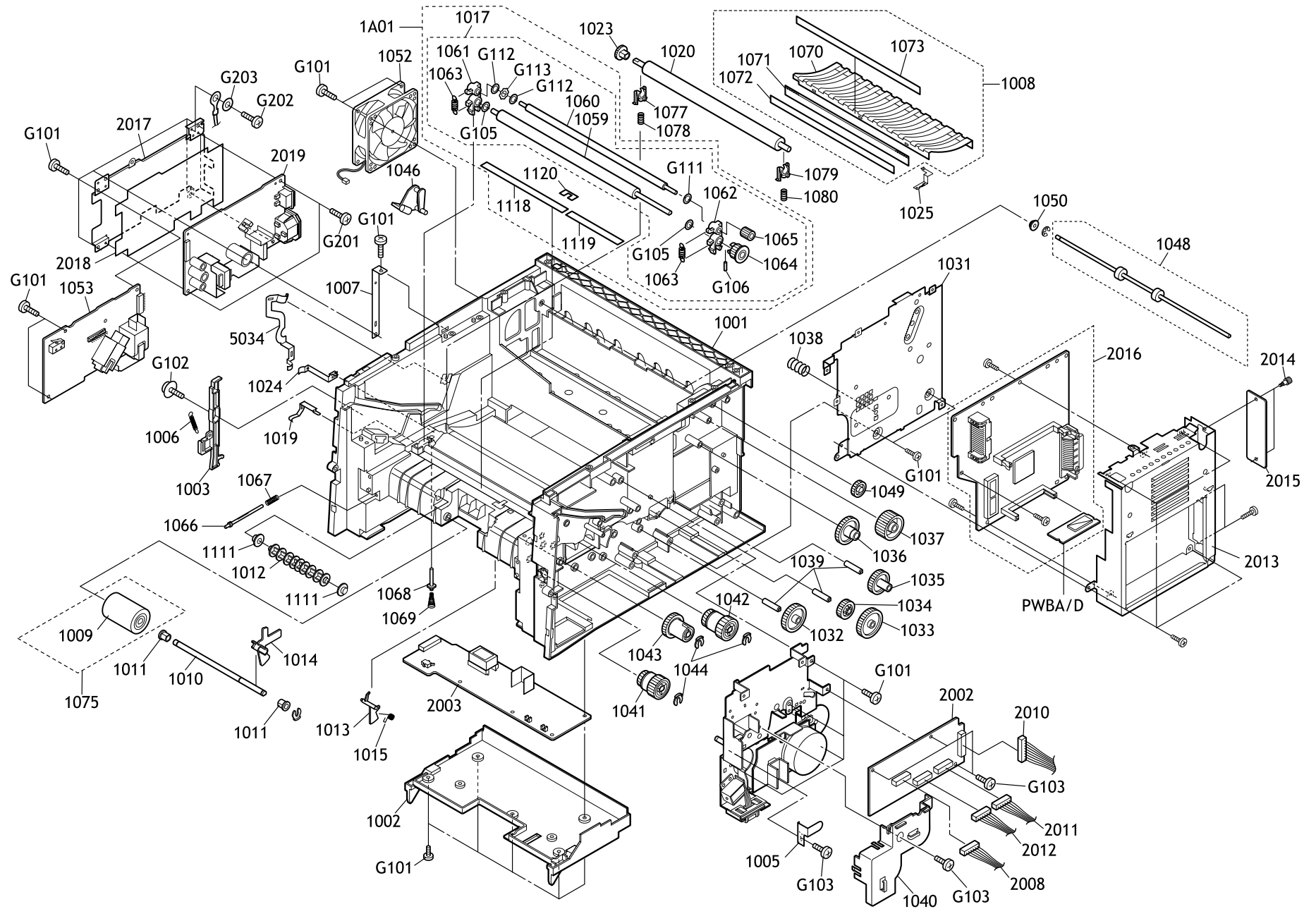
## Ordering Information

1. ISP refers to Initially- supplied part; SP refers to Service part.
2. The Ref. No's correspond to those numbers in the exploded diagram.
3. Availability of ISP (Initially- Supplied Parts) varies depending on the destination of the product. For details, refer to the ISP List supplied separately by Kyocera.
4. Those parts bearing numbers in the diagram but not listed in the parts list are not suppliable as a general supply part.

1 - Enclosure

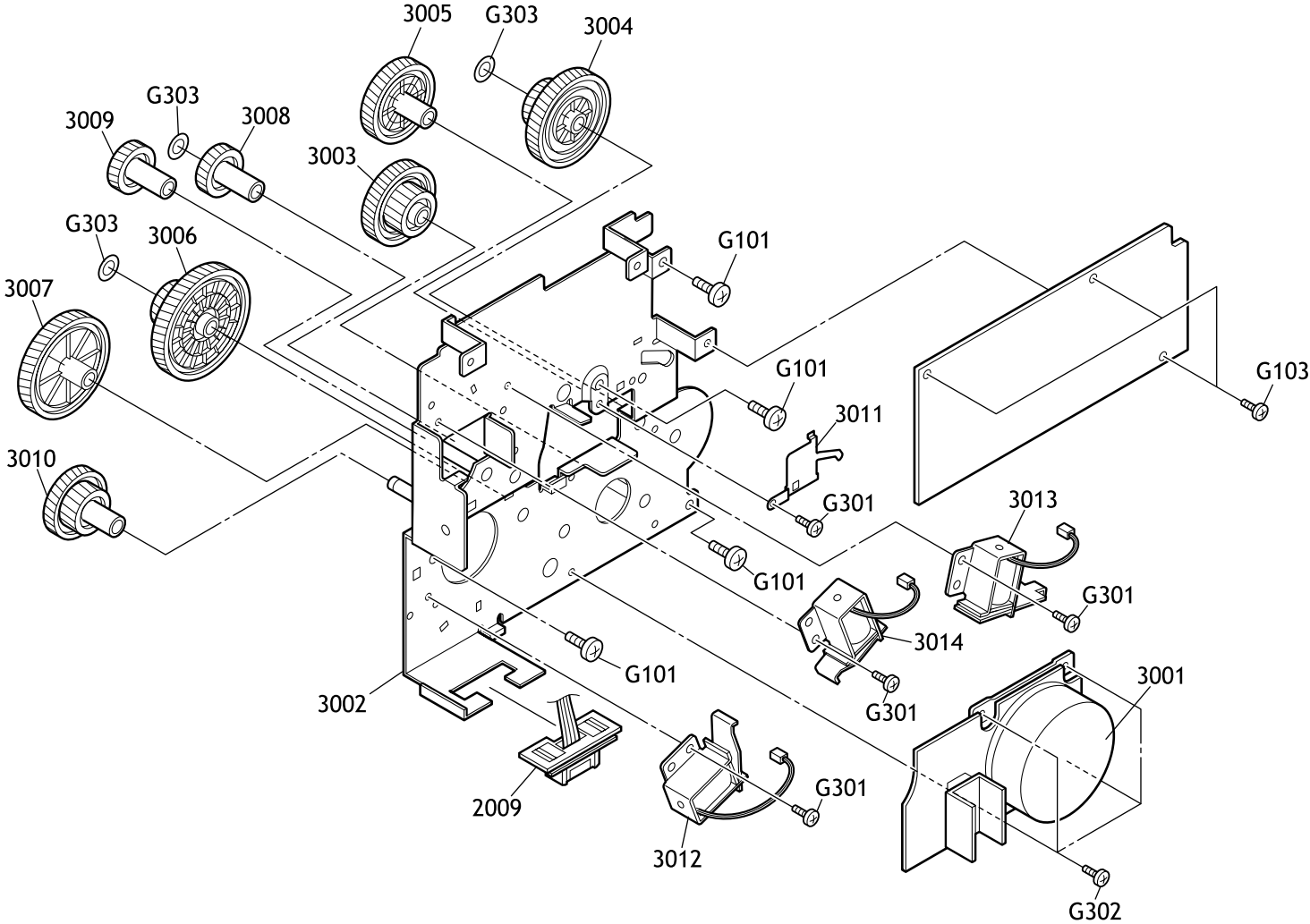


# 2 - Frame

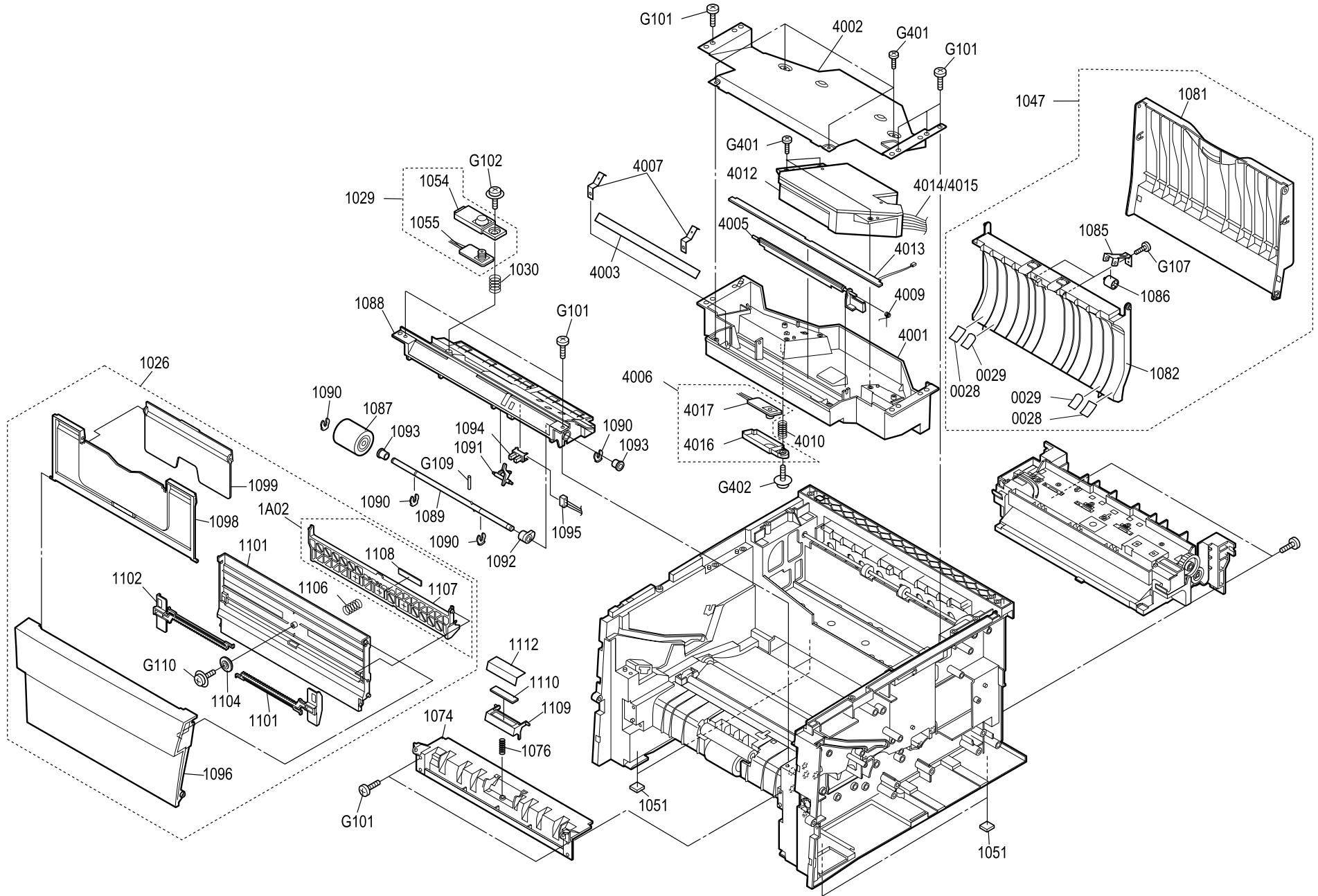




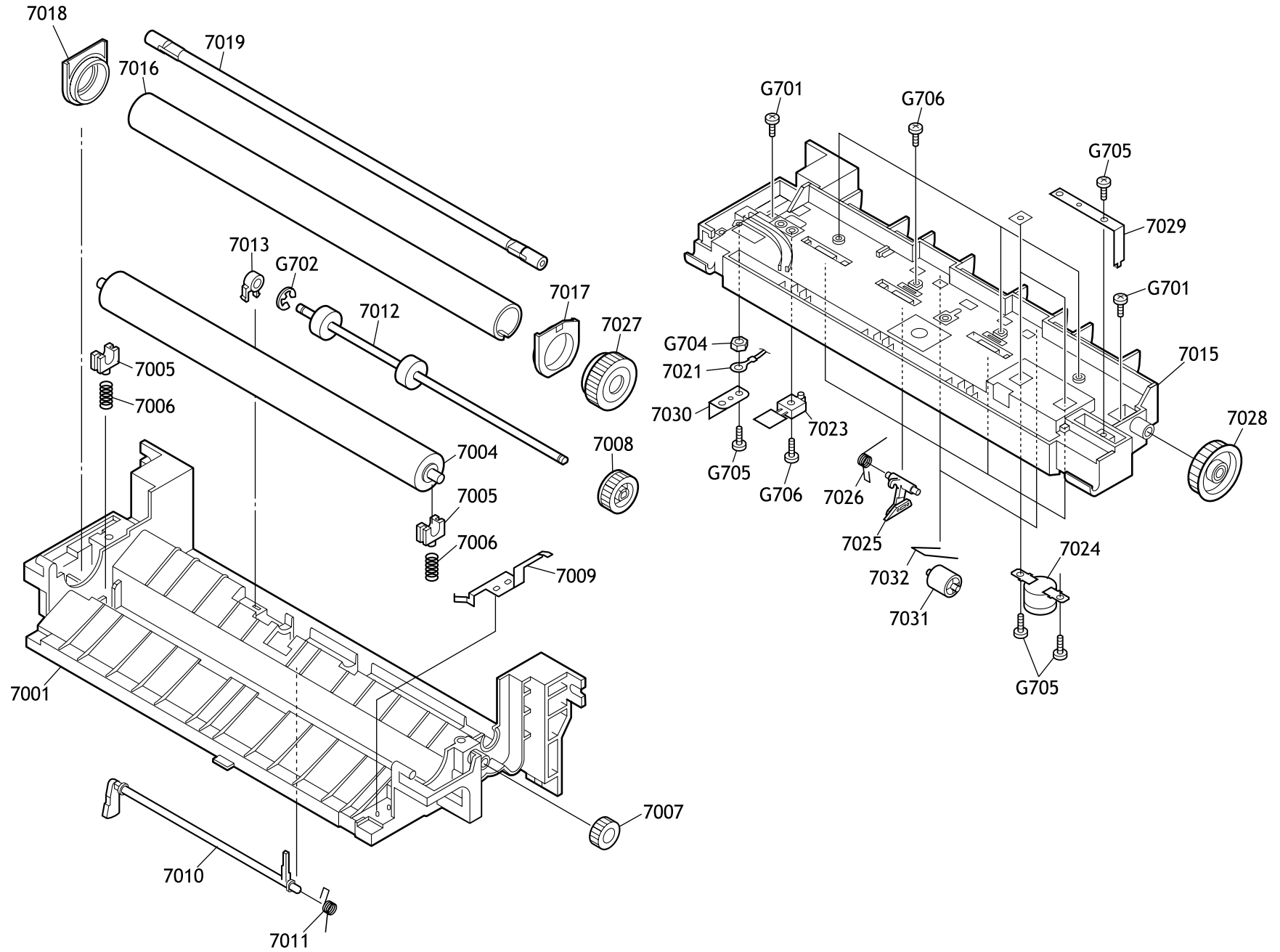
# 4 - Drive Unit



# 5 - Upper Frame



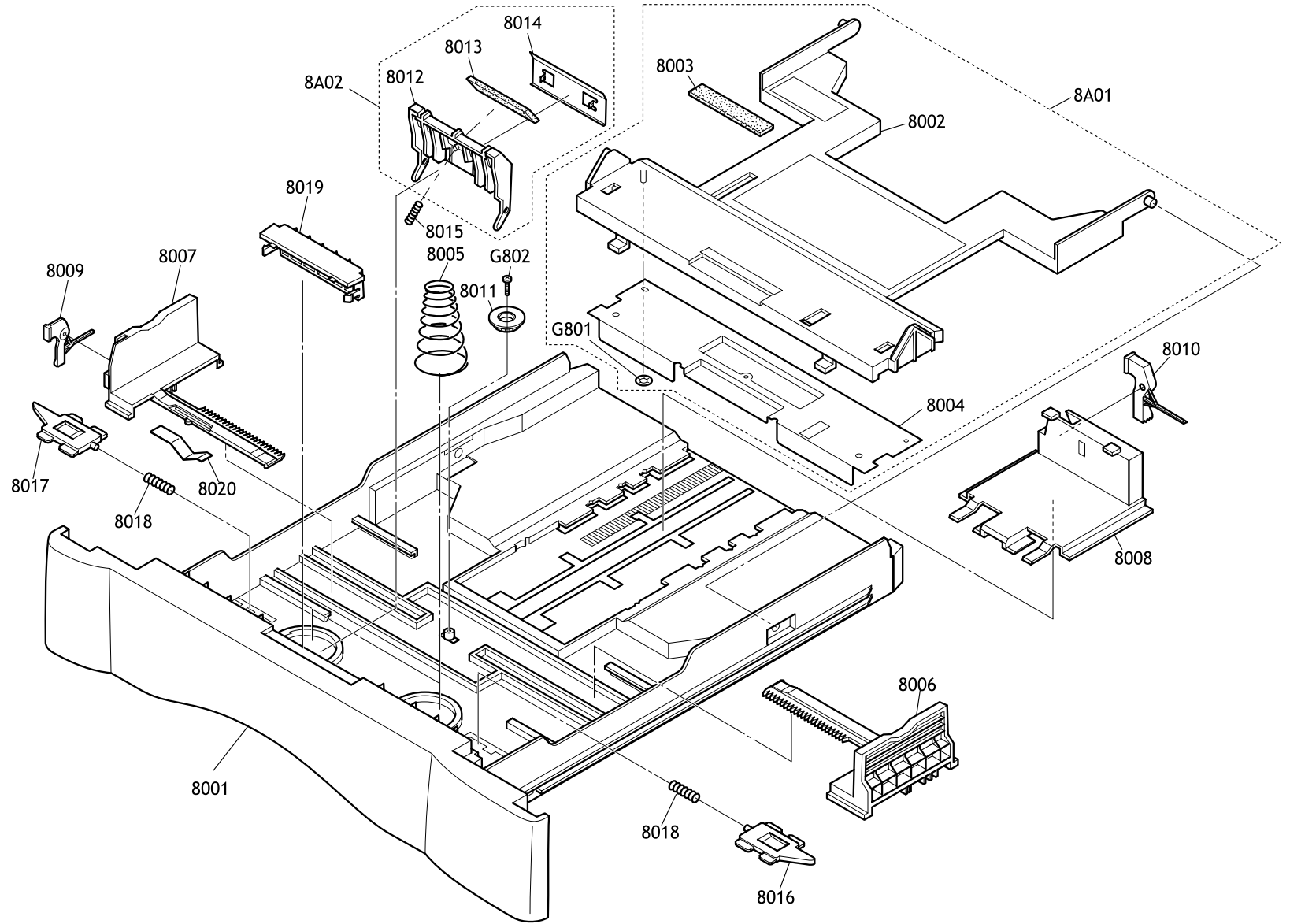
### 6 - Fuser Unit



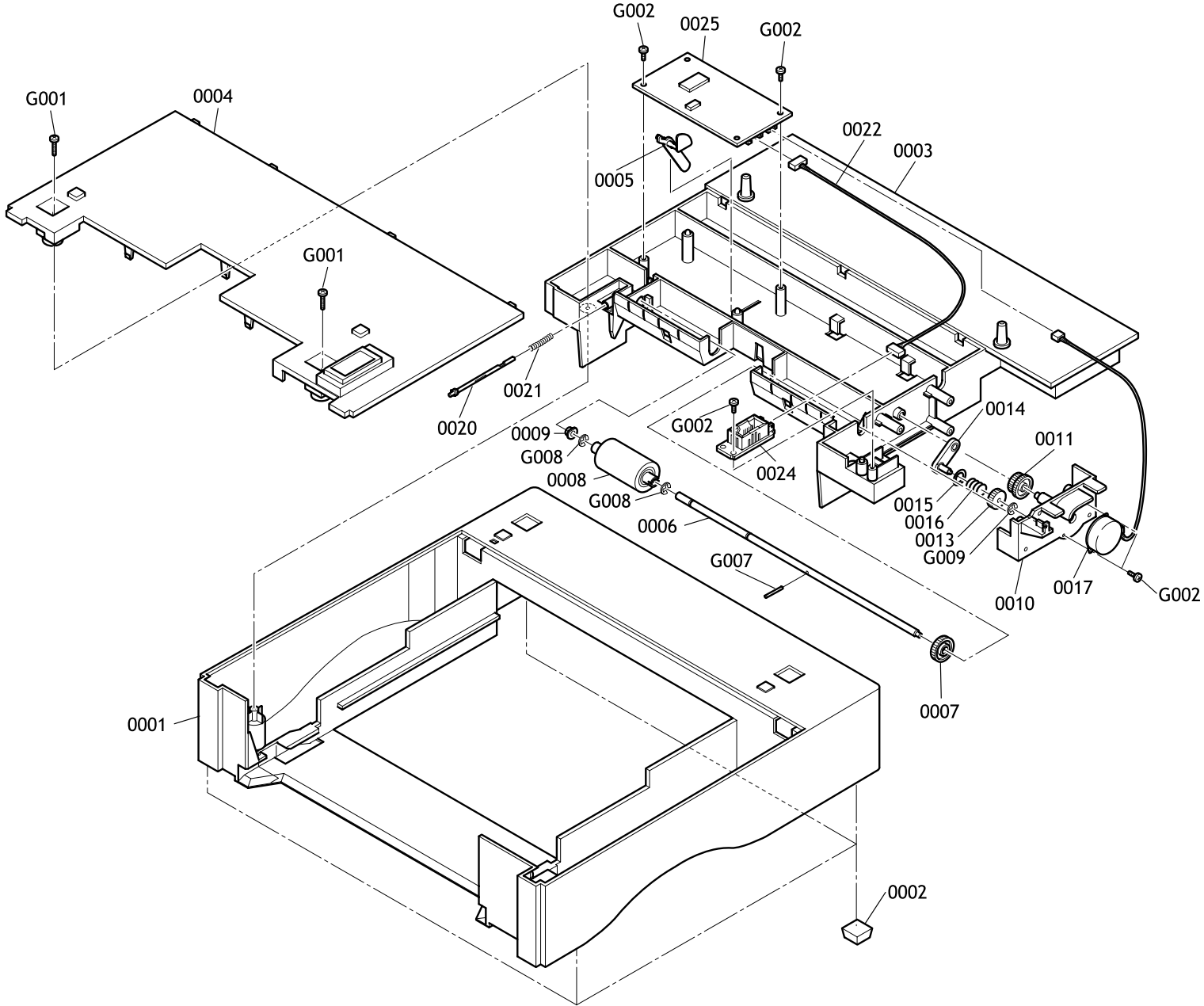




# 8 - Option Paper Feeder, Paper Cassette



# 9 - Paper Feeder



## 10 - Parts Lists

Table 1 - Modules

Ref. No.	Part No.	Alt. #1	Alt. #2	Description	ISP	Q'ty	CHP-5012 FS-1050			Remarks
							KMDE	KMA	KMSG	
	5PLPXU2AEKX			PU-40 PROCESS UNIT	1	1	No	No	No	
	5PLPXCDAKCN			PU-41K PROCESS UNIT	1	1	Yes	No	No	
	5PLPXKVAPKX			PU-42 PROCESS UNIT	1	1	No	Yes	Yes	Yes
	5PLPXNRAK0E			PU-42K PROCESS UNIT	1	1	Yes	No	No	No
	5PLPXU3AEKX			FK-40 FUSER UNIT (E)	240V	1	1	No	No	No
	5PLPXU4AEKX			FK-40 FUSER UNIT (U)	120V	1	1	No	No	No
	5PLPXCSAJKJ			FK-40 FUSER UNIT (J)	100V	1	1	No	No	No
	5PLPXCWAPKX			FK-41 FUSER UNIT (E)	240V	1	1	Yes	No	No
	5PLPXCXAAMK			FK-41 FUSER UNIT (U)	120V	1	1	No	No	No
	5PLPXGCA0LE			FK-41 FUSER UNIT (TWN)	110V	1	1	No	No	No
	5PLPXCYAJKJ			FK-41 FUSER UNIT (J)	100V	1	1	No	No	No
	5PLPXKYAPKX			FK-42 FUSER UNIT (E)	240V	1	1	Yes	No	Yes
	5PLPXKZAPKX			FK-42 FUSER UNIT (U)	120V	1	1	No	Yes	No
	5PLPXLAAJKC			FK-42 FUSER UNIT (J)	100V	1	1	No	No	No
	5PLPXT9AEKX			LK-40 SCANNER UNIT	1	1	No	No	No	No
	5PLPXAAPKX			LK-41 SCANNER UNIT	1	1	Yes	No	No	No
	5PLPXKWAPKX			LK-42 SCANNER UNIT	1	1	Yes	Yes	Yes	Yes
	5PLPXU0AEKX			DR-40 DRIVE UNIT	1	1	No	No	No	No
	5PLPXCZAPKX			DR-41 DRIVE UNIT	1	1	Yes	No	No	No
	5PLPXXAPKX			DR-42 DRIVE UNIT	1	1	Yes	Yes	Yes	Yes
	5PLPXU5AEKX			MC-40 MCH ASSY	1	1	Yes	Yes	Yes	Yes
	5PLPXU6AEKX			PC-40 CASSETTE ASSY A4	1	1	Yes	No	No	No
	5PLPXU7AEKX			PC-40 CASSETTE ASSY LTR	1	1	No	No	No	No
	5PLPXLBAPKX			PC-42 CASSETTE ASSY A4	1	1	Yes	No	Yes	Yes
	5PLPXMLAPKX			PC-42 CASSETTE ASSY LTR	1	1	No	Yes	No	No

Table 2 - 1000—1999

Ref. No.	Part No.	Alt. #1	Alt. #2	Description	ISP	Q'ty	CHP-5012 FS-1050			Remarks
							KMDE	KMA	KMSG	
1001	5MVB888CB002			FRAME BASE	1	Yes	No	No	No	
1002	5MVB874CH002			COVER PWB	1	Yes	Yes	Yes	Yes	

Table 2 - 1000—1999 (Continued)

Ref. No.	Part No.	Alt. #1	Alt. #2	Description	ISP	Q'ty	CHP-5012 FS-1050			Remarks	
							KMDE	KMA	KMSG		
	5MVB874CH004			COVER PWB PANEL		1	Yes	No	No	No	
1003	5MVX721DN001			LEVER INTERLOCK		1	Yes	Yes	Yes	Yes	
1006	5MMW351LD006			SPRING INTERLOCK		1	Yes	Yes	Yes	Yes	
1007	5MML622LD003			PLATE EARTH JOINT		1	Yes	Yes	Yes	Yes	
1008	5AAY3010E+31			EARTH GUIDE ASSY		1	Yes	Yes	Yes	Yes	
1009	5AAVROLL*044			ROLLER FEED ASSY	1	1	No	No	No	No	B-8700
1009	5AAVROLL+056			ROLLER FEED J ASSY	1	1	Yes	Yes	Yes	Yes	B-8700
1010	5MMT766SN007			SHAFT FEED		1	Yes	Yes	Yes	Yes	
1011	5MVM176DN026			BUSH FEED		2	Yes	Yes	Yes	Yes	
1012	5MVT676DB002			PULLY FEED		1	Yes	Yes	Yes	Yes	
1013	5MVX432DB009			ACTUATOR REGIST		1	Yes	Yes	Yes	Yes	
1014	5MVX542DB003			ACTUATOR PE		1	Yes	Yes	Yes	Yes	
1015	5MMW151LD005			SPRING ACTUATOR REG		1	Yes	Yes	Yes	Yes	
1017	5AAY3010E+17			ROLLER REGIST ASSY		1	Yes	No	No	No	
1017	5AAYA88E++12			ROLLER REGIST ASSY		1		Yes	Yes	Yes	
1018	5MVS822KF013			SHEET REGIST		1	No	No	No	No	YC-6046
1118	5MVS722KF008			SHEET REGIST L		1	Yes	Yes	Yes	Yes	YC-6046
1119	5MVS622KF010			SHEET REGIST R		1	Yes	Yes	Yes	Yes	YC-6046
1120	5MVS441KF008			SHEET REGIST SW		1	Yes	No	No	No	YC-6046
1019	5MMX532LD005			CONTACT EARTH REG		1	Yes	Yes	Yes	Yes	
1020	5MMT876SN074			ROLLER TRANSFER	1	1	Yes	Yes	Yes	Yes	
1023	5MVG127DB048			GEAR TC Z18		1	Yes	Yes	Yes	Yes	
1024	5MMX432LD005			CONTACT TRANSFER		1	Yes	Yes	Yes	Yes	
1025	5MMX331LD003			PLATE EARTH BRUSH		1	Yes	Yes	Yes	Yes	
1026	5AAY3010E+39			MPF ASSY E	1	1	No	No	No	No	
1026	5AAY3010U+10			MPF ASSY U	1	1	No	No	No	No	
1026	5AAY1000J+09			MPF ASSY J	1	1	No	No	No	No	
1026	5AAYA87CH+04			MPF ASSY CHU	1	1	Yes	Yes	Yes	Yes	
1026	5AAYA88E++07			MPF ASSY E	1	1		No	No	No	
1029	5AAY3010E+18			TE SENSOR ASSY	1	1	Yes	Yes	Yes	Yes	
1030	5MMW261LD036			SPRING TE SENSOR		1	Yes	Yes	Yes	Yes	
1031	5MMS775SL001			PLATE CONTROLLER	1	1	Yes	Yes	Yes	Yes	
1032	5MVG148DN045			GEAR Z38H	1	1	Yes	Yes	Yes	Yes	
1033	5MVG148DN046			GEAR FREE Z40H	1	1	Yes	Yes	Yes	Yes	
1034	5MVG138DN041			GEAR FREE Z25S	1	1	Yes	Yes	Yes	Yes	
1035	5MVG148DN047			GEAR Z34S	1	1	Yes	Yes	Yes	Yes	
1036	5MVG148DN048			GEAR Z40S	1	1	Yes	Yes	Yes	Yes	
1037	5MVG148DN049			GEAR Z37S	1	1	Yes	Yes	Yes	Yes	

Table 2 - 1000—1999 (Continued)

Ref. No.	Part No.	Alt. #1	Alt. #2	Description	ISP	Q'ty	CHP-5012 FS-1050			Remarks	
							KMDE	KMA	KMSG		
1038	5MMW271LD010			SPRING FREE	1	1	Yes	Yes	Yes	Yes	
1039	5MMT364SN003			PIN DRIVE	1	3	Yes	Yes	Yes	Yes	
1040	5MVB663SB048			COVER CORD		1	Yes	Yes	Yes	Yes	
1041	5AAVCLTCH015			CLUTCH FEED	1	1	Yes	Yes	Yes	Yes	
1042	5AAVCLTCH016			CLUTCH REGIST	1	1	Yes	Yes	Yes	Yes	
1043	5AAVCLTCH017			CLUTCH MPF	1	1	Yes	Yes	Yes	Yes	
1044	5MVX111DN003			RING STOPPER	1	5	Yes	Yes	Yes	Yes	
1045	5MMX332LD013			PLATE EARTH MPF		1	Yes	Yes	Yes	Yes	
1046	5MVX322SB020			ACTUATOR FUSER B		1	Yes	Yes	Yes	Yes	
1047	5AAY3010E+35			COVER REAR ASSY	1	1	Yes	No	No	No	
1047	5AAY3010E+58			COVER REAR ASSY	1	1		Yes	Yes	Yes	
1048	5AAY3010E+36			ROLLER EXIT UP ASSY	1	1	Yes	Yes	Yes	Yes	
1049	5MVG137DN030			GEAR EXIT Z23 UP	1	1	Yes	Yes	Yes	Yes	
1050	5MVM176DW001			BUSH EXIT		1	Yes	Yes	Yes	Yes	
1051	5MVS228RB019			FOOT		4	Yes	Yes	Yes	Yes	
1052	5EZN2402403+01			FAN MOTOR	1	1	Yes	Yes	Yes	Yes	
1053	5AAXTR046VDA			TRANS ASSY	1	1	No	No	No	No	
1053	5AAXTR049VDA			TRANS ASSY	1	1	Yes	No	No	No	
1059	5MMT876SN073			ROLLER REGIST LOW		1	Yes	Yes	Yes	Yes	
1060	5MMT865SN010			ROLLER REGIST UP		1	Yes	Yes	Yes	Yes	
1061	5MVX221DB019			BUSH REGIST LEFT		1	Yes	Yes	Yes	Yes	
1062	5MVX221DW006			BUSH REGIST RIGHT		1	Yes	Yes	Yes	Yes	
1063	5MMW261LD023			SPRING REGIST R		2	Yes	Yes	Yes	Yes	
1064	5MVG127DB047			GEAR REGIST Z20		1	Yes	Yes	Yes	Yes	
1065	5MVG126DB025			GEAR REGIST Z13		1	Yes	Yes	Yes	Yes	
1066	5MVT653DW001			PIN CASSETTE		1	Yes	Yes	Yes	Yes	
1067	5MMW341LD005			SPRING PIN CASSETTE		1	Yes	Yes	Yes	Yes	
1068	5MMT365SN003			PIN CONTACT BIAS		1	Yes	Yes	Yes	Yes	
1069	5MMW361LD015			SPRING PIN BIAS		1	Yes	Yes	Yes	Yes	
1074	5MVX866SH012			GUIDE TURN		1	Yes	Yes	Yes	Yes	
1075	5AAY3010E+41			SEPARATOR MPF ASSY	1	1	Yes	Yes	Yes	Yes	
1076	5MMW261LD038			SPRING SEPA MPF		1	Yes	Yes	Yes	Yes	
1077	5MVX221DB023			BUSH TC L	1	1	Yes	Yes	Yes	Yes	
1078	5MMW251LD043			SPRING TC L		1	Yes	Yes	Yes	Yes	
1079	5MVX221DW008			BUSH TC R	1	1	Yes	Yes	Yes	Yes	
1080	5MMW261LD034			SPRING TC R		1	Yes	Yes	Yes	Yes	
1081	5MVB874SH018			COVER REAR		1	Yes	Yes	Yes	Yes	
1082	5MVB874SH019			TRAY EXIT FU		1	Yes	Yes	Yes	Yes	

Table 2 - 1000—1999 (Continued)

Ref. No.	Part No.	Alt. #1	Alt. #2	Description	ISP	Q'ty	CHP-5012 FS-1050			Remarks	
							KMDE	KMA	KMSG		
1085	5MMX332LD021			BKT PULLEY FD		1	Yes	Yes	Yes	Yes	
1086	5MVM273DB005			PULLEY EXIT		1	Yes	Yes	Yes	Yes	
1087	5AAVROLL*045			ROLLER MPF ASSY	1	1	Yes	Yes	Yes	Yes	
1088	5MVX854SH002			HOLDER MP FEED		1	Yes	Yes	Yes	Yes	
1089	5MMT766SN008			SHAFT MPF		1	Yes	Yes	Yes	Yes	
1090	5MVX111DN003			RING STOPPER		3	Yes	Yes	Yes	Yes	
1091	5MVX432DB010			ACTUATOR MPF		1	Yes	Yes	Yes	Yes	
1092	5MVX221DN014			CAM MPF R		1	Yes	Yes	Yes	Yes	
1093	5MVM176DN026			BUSH FEED		2	Yes	Yes	Yes	Yes	
1094	5ENXGP1A73A**01			PT SENSOR	1	1	Yes	Yes	Yes	Yes	
1095	5AACCNRM0GEA			CONN.CORD ASSY		1	Yes	Yes	Yes	Yes	
1096	5MVB872SH018			COVER MPF	E	1	No	No	No	No	
1096	5MVB872SH020			COVER MPF	U	1	No	No	No	No	
1096	5MVB872SH029			COVER MPF	IBM	1	No	No	No	No	
1096	5MVB872SH030			COVER MPF		1	No	No	No	No	
1096	5MVB872SH031			COVER MPF CHU		1	Yes	No	No	No	
1098	5MVX861SH004			TRAY MPF A		1	Yes	Yes	Yes	Yes	
1099	5MVX751SH001			TRAY MPF B		1	Yes	Yes	Yes	Yes	
1111	5MVM161DW001			BUSH PULLEY FEED		2	Yes	Yes	Yes	Yes	
1A01	5AAY3010E+45			REGIST KIT	1	1	Yes	No	No	No	
1A02	5AAY3010E+40			BOTTOM MPF ASSY		1	Yes	Yes	Yes	Yes	

Table 3 - 2000—2999

Ref. No.	Part No.	Alt. #1	Alt. #2	Description	ISP	Q'ty	CHP-5012 FS-1050			Remarks	
							KMDE	KMA	KMSG		
2002	5AAPRCZC2007AH			P.W.BOARD ASSY	ENGINE KP-781	1	1	No	No	No	No
2002	5AAPRCZC2007BH			P.W.BOARD ASSY	ENGINE KP-781	1	1	No	No	No	No
2002	5AAPRCZC2007CH			P.W.BOARD ASSY	ENGINE KP-781	1	1	No	No	No	No
2002	5AAPRCZC2007DH			P.W.BOARD ASSY	ENGINE KP-781	1	1	No	No	No	No
2002	5AAPRCZC2007EH			P.W.BOARD ASSY	ENGINE KP-781	1	1	No	No	No	No
2002	5AAPRCZC2007FH			P.W.BOARD ASSY	ENGINE KP-781	1	1	Yes	No	No	No
2002	5AAPRCZC2007GH			P.W.BOARD ASSY	ENGINE KP-781	1	1	No	No	No	No
2002	5AAPRCZC2011AH			P.W.BOARD ASSY	ENGINE KP-882	1	1		Yes	No	Yes
2002	5AAPRCZC2011BH			P.W.BOARD ASSY	ENGINE KP-882	1	1		No	No	No
2002	5AAPRCZC2011CH			P.W.BOARD ASSY	ENGINE KP-882	1	1		No	Yes	No

Table 3 - 2000–2999 (Continued)

Ref. No.	Part No.	Alt. #1	Alt. #2	Description	ISP	Q'ty	CHP-5012 FS-1050			Remarks	
							KMDE	KMA	KMSG		
2002	5AAPRCZC2011DH			P.W.BOARD ASSY	ENGINE KP-882	1	1	No	No	No	
2002	5AAPRCZC2011EH			P.W.BOARD ASSY	ENGINE KP-882	1	1	No	No	No	
2002	5AAPRCZC2011FH			P.W.BOARD ASSY	ENGINE KP-882	1	1	No	No	No	
2003	5AAPRCZC1008AH			P.W.BOARD ASSY	BIAS KP-783	1	1	Yes	No	No	No
2003	5AAPRCZC1009AH			P.W.BOARD ASSY	BIAS KP-884	1	1	Yes	Yes	Yes	
2008	5AACCNRL7GEA			CONN.CORD ASSY		1	Yes	No	No	No	
2009	5AACCNRM1GEA			CONN.CORD ASSY		1	Yes	Yes	Yes	Yes	
2010	5AACCNRM2GEA			CONN.CORD ASSY		1	Yes	No	No	No	
2011	5AACCNRL0GEA			CONN.CORD ASSY		1	Yes	No	No	No	
2012	5AACCNRL1GEA			CONN.CORD ASSY		1	Yes	No	No	No	
2013	5MMB775SL013			BOX CONTROLLER		1	Yes	No	No	No	
2015	5MMS636SD009			PLATE OPTION		1	Yes	No	No	No	
2016	5AAPRLGC2021AH			P.W.BOARD ASSY	MAIN KP-780	1	1	No	No	No	No
2016	5AAPRLGC2021CH			P.W.BOARD ASSY	MAIN KP-780	1	1	No	No	No	No
2016	5AAPRLGC2021DH			P.W.BOARD ASSY	MAIN KP-780	1	1	No	No	No	No
2016	5AAPRLGC2022AH			P.W.BOARD ASSY	MAIN KP-881	1	1	Yes	No	No	No
2016	5AAPRLGC2023AH			P.W.BOARD ASSY	MAIN KP-888	1	1	Yes	Yes	Yes	
2016	5AAPRLGC2023BH			P.W.BOARD ASSY	MAIN KP-888	1	1	No	No	No	No
2017	5MMX773SL001			PLATE SW REG		1	Yes	Yes	Yes	Yes	
2018	5MVS765KF001			SHEET SW REG		1	Yes	Yes	Yes	Yes	
2019	5AAEZ3010E+1	5AAEZ3010E+2		SWITCHING REGULATOR(E) 240V		1	1	No	No	No	No
2019	5AAEZ3010E+1			SWITCHING REGULATOR(E) 240V		1	1	Yes	No	No	No
2019	5AAEZ3010U+1			SWITCHING REGULATOR(U) 120V		1	1	No	No	No	No
2019	5AAEZA93E++1			SWITCHING REGULATOR(E) 240V		1	1	Yes	No	Yes	
2019	5AAEZA93U++1			SWITCHING REGULATOR(U) 120V		1	1	No	Yes	No	

Table 4 - 3000–3999

Ref. No.	Part No.	Alt. #1	Alt. #2	Description	ISP	Q'ty	CHP-5012 FS-1050			Remarks	
							KMDE	KMA	KMSG		
3001	5AAXMT047GEA			MOTOR MAIN for 10PPM	1	1	No	No	No	No	
3001	5AAXMT056GEA			MOTOR MAIN for 12PPM	1	1	Yes	No	No	No	
3001	5AAXMT061GEA			MOTOR MAIN for 14PPM	1	1		Yes	Yes	Yes	
3002	5MMX776SL005			PLATE DRIVE	1	Yes	Yes	Yes	Yes	Yes	
3003	5MVG168DN017			GEAR Z68H-Z21H	1	Yes	Yes	Yes	Yes	Yes	



Table 4 - 3000–3999 (Continued)

Ref. No.	Part No.	Alt. #1	Alt. #2	Description	ISP	Q'ty	CHP-5012 FS-1050			Remarks
							KMDE	KMA	KMSG	
3004	5MVG159DN012			GEAR Z48H-Z21H	1	Yes	Yes	Yes	Yes	
3005	5MVG148DN044			GEAR Z40H	1	Yes	Yes	Yes	Yes	
3006	5MVG169DN032			GEAR Z95H-Z21H	1	Yes	Yes	Yes	Yes	
3007	5MVG169DN033			GEAR Z53H	1	Yes	Yes	Yes	Yes	
3008	5MVG138DN042			GEAR Z24H	1	Yes	Yes	Yes	Yes	
3009	5MVG137DN029			GEAR Z21H	1	Yes	Yes	Yes	Yes	
3010	5MVG148DN050			GEAR Z36H-Z21H	1	Yes	Yes	Yes	Yes	
3011	5MMX521LD005			PLATE EARTH DRUM	1	Yes	Yes	Yes	Yes	
3012	5EZSA2402410301			SOLENOID FEED	1	1	Yes	Yes	Yes	Yes
3013	5EZSA2402410401			SOLENOID REGIST	1	1	Yes	Yes	Yes	Yes
3014	5EZSA2402410501			SOLENOID MPF	1	1	Yes	Yes	Yes	Yes

Table 5 - 4000–4999

Ref. No.	Part No.	Alt. #1	Alt. #2	Description	ISP	Q'ty	CHP-5012 FS-1050			Remarks	
							KMDE	KMA	KMSG		
4001	5MVB876CB003			FRAME MIDDLE	1	Yes	Yes	Yes	Yes		
4002	5MMX875SL005			PLATE LSU	1	Yes	Yes	Yes	Yes		
4003	5MVQ711GX004			MIRROR EXIT	1	Yes	Yes	Yes	Yes		
4005	5MVX721SB004			SHUTTER LSU	1	Yes	Yes	Yes	Yes		
4006	5AAV3010E+26			FULL SENSOR ASSY	1	1	Yes	Yes	Yes	Yes	
4007	5MMX221LD024			SPRING MIRROR	2	Yes	Yes	Yes	Yes		
4009	5MMW341LD006			SPRING SHUTTER LSU	1	Yes	Yes	Yes	Yes		
4010	5MMW261LD040			SPRING FULL SENSOR	1	Yes	Yes	Yes	Yes		
4011	5MVVL661WN34			LABEL LASER CAUTION	1	Yes	Yes	Yes	Yes		
4013	5AAPREL1001AH			P.W.BOARD ASSY	ERASE KP-790	1	1	Yes	Yes	Yes	49539
4021	5MVS319RF004			SEAL LSU D	1	Yes	Yes	Yes	Yes		

Table 6 - 5000–5999

Ref. No.	Part No.	Alt. #1	Alt. #2	Description	ISP	Q'ty	CHP-5012 FS-1050			Remarks
							KMDE	KMA	KMSG	
5019	5MVX331PH001			CAP MCH	1	Yes	Yes	Yes	Yes	
5034	5MMX632LD006			CONTACT MAIN	1	Yes	No	No	No	

Table 6 - 5000–5999 (Continued)

Ref. No.	Part No.	Alt. #1	Alt. #2	Description	ISP	Q'ty	CHP-5012 FS-1050			Remarks
							KMDE	KMA	KMSG	
5A01	5AAY3010E+52			BLADE KIT		1	Yes	Yes	Yes	Yes
5A02	5AAY3010E+53			COVER DRUM R2 KIT		1	Yes	Yes	Yes	Yes
5A03	5AAY3010E+54			COVER DRUM L2 KIT		1	Yes	Yes	Yes	Yes

Table 7 - 7000-7999

Ref. No.	Part No.	Alt. #1	Alt. #2	Description	ISP	Q'ty	CHP-5012 FS-1050			Remarks
							KMDE	KMA	KMSG	
7001	5MVX876KB004			FRAME FUSER LOW		1	Yes	Yes	Yes	Yes
7004	5MMT876SN075			ROLLER PRESS		1	Yes	Yes	Yes	Yes
7005	5MVX221XN003			BUSH PRESS		2	Yes	Yes	Yes	Yes
7006	5MMW261LD037			SPRING PRESS		2	Yes	Yes	Yes	Yes
7007	5MVG127DN070			GEAR IDLE Z18		1	Yes	Yes	Yes	Yes
7008	5MVG137DN031			GEAR EXIT Z23		1	Yes	Yes	Yes	Yes
7009	5MMX665LD004			PLATE EARTH FUSER		1	Yes	Yes	Yes	Yes
7010	5MVX731CB002			ACTUATOR FUSER A		1	Yes	Yes	Yes	Yes
7011	5MMW261LD017			SPRING ACTUATOR		1	Yes	Yes	Yes	Yes
7012	5MMT774SN001			ROLLER EXIT LOW		1	Yes	Yes	Yes	Yes
7013	5MVX211DB016			BUSH EXIT		1	Yes	Yes	Yes	Yes
7014	5MVVL731WN14			LABEL FUSER CAUTION		1	Yes	Yes	Yes	Yes
7015	5MVB863KB003			FRAME FUSER UP		1	Yes	Yes	Yes	Yes
7016	5MMT876AX001			ROLLER HEAT		1	Yes	Yes	Yes	Yes
7017	5MVM188XN015			BUSH HEAT R		1	Yes	Yes	Yes	Yes
7018	5MVM188XN016			BUSH HEAT L		1	Yes	Yes	Yes	Yes
7019	5EZPB2411920201			HEATER LAMP (E)	240V	1	1	No	No	No
7019	5EZPB1213820201			HEATER LAMP (U)	120V	1	1	No	No	No
7019	5EZPB1014520201	ISP1000J+001		HEATER LAMP (J)	100V	1	1	No	No	No
7019	5EZPB2412120702			HEATER LAMP (E)	240V	1	1	Yes	No	No
7019	5EZPB1214220701			HEATER LAMP (U)	120V	1	1	No	No	No
7019	5EZPB1015020801			HEATER LAMP (J)	100V	1	1	No	No	No
7019	5EZPB2413120101			HEATER LAMP (E)	240V 14PPM	1	1	Yes	No	Yes
7019	ISPA93U++002			HEATER LAMP (U)	120V 14PPM	1	1	No	Yes	No
7019	ISPA94J++001			HEATER LAMP (J)	100V 14PPM	1	1	No	No	No
7021	5AACCNRL4GEA			CONN.CORD ASSY	E	1	Yes	No	No	No
7021	5AACCNRL5GEA			CONN.CORD ASSY	U	1	No	No	No	No
7021	5AACCNSE1GEA			CONN.CORD ASSY	J	1	No	No	No	No

Table 7 - 7000-7999 (Continued)

Ref. No.	Part No.	Alt. #1	Alt. #2	Description	ISP	Q'ty	CHP-5012 FS-1050			Remarks
							KMDE	KMA	KMSG	
7023	5AAXTM014GEA			THERMISTOR ASSY	1	1	Yes	Yes	Yes	Yes
7024	5EYFFQ16002Q+01			THERMO CUT OUT	1	1	Yes	No	No	No
7024	5EYFFQ16001++01			THERMO CUT OUT	1	1		Yes	Yes	Yes
7025	5MVX222XN002			SEPARATOR	4		No	No	No	B-8652/YC-6067
7025	5AAVSEPRT015			SEPARATOR ASSY	4		Yes	Yes	Yes	B-8652/YC-6067
7026	5MMW261LD015			SPRING SEPARATOR	4		No	No	No	B-8652/YC-6067
7026	5MMW261LD055			SPRING SEPARATOR	4		Yes	Yes	Yes	B-8652/YC-6067
	5MVS222KN006			SHEET REAR	2		Yes	Yes	Yes	B-8652
	5MVS222KW001			SHEET REAR B	2		Yes	Yes	Yes	B-8664
7027	5MVG148XN008			GEAR HEAT Z33	1		Yes	Yes	Yes	
7028	5MVG148XN009			GEAR IDLE Z34	1		Yes	Yes	Yes	
7029	5MML531RD001	5MML531RD002		HOLDER LAMP A	1		Yes	Yes	Yes	
7030	5MML211RD002			HOLDER LAMP B	1		Yes	Yes	Yes	
7031	5MVM273DB005			PULLEY EXIT	2		Yes	Yes	Yes	
7032	5MMW601LD011			SPRING PULLEY	2		Yes	Yes	Yes	

Table 8 - 8000-8999

Ref. No.	Part No.	Alt. #1	Alt. #2	Description	ISP	Q'ty	CHP-5012 FS-1050			Remarks
							KMDE	KMA	KMSG	
8001	5MVB886SH063			BASE CASSETTE	1	Yes	Yes	Yes	Yes	
8004	5MMS856SL001			PLATE BOTTOM	1	Yes	Yes	Yes	Yes	
8005	5MMW552LD002			SPRING CASSETTE	2	Yes	Yes	Yes	Yes	
8006	5MVX765SH002			GUIDE SIDE R	1	Yes	Yes	Yes	Yes	
8007	5MVX765SH003			GUIDE SIDE L	1	Yes	Yes	Yes	Yes	
8008	5MVX664SH003			STOPPER PAPER	1	Yes	Yes	Yes	Yes	
8009	5MVX541DG003			LEVER SIDE	1	Yes	Yes	Yes	Yes	
8010	5MVX541DG002			LEVER REAR	1	Yes	Yes	Yes	Yes	
8011	5MVG127DN071			GEAR CASSETTE	1	Yes	Yes	Yes	Yes	
8015	5MMW251LD047			SPRING SEPARATOR C	1	Yes	Yes	Yes	Yes	
8016	5MVX431DW001			LOCK CASSETTE R	1	Yes	Yes	Yes	Yes	
8017	5MVX431DW002			LOCK CASSETTE L	1	Yes	Yes	Yes	Yes	
8018	5MMW251LD045			SPRING LOCK	2	Yes	Yes	Yes	Yes	
8019	5MMP141LD003			PLATE STOPPER	1	Yes	Yes	Yes	Yes	
8020	5MMP141LD002			PLATE SIDE GUIDE	1	Yes	Yes	Yes	Yes	
8021	5MMW171LD006			SPRING STOPPER	1	Yes	Yes	Yes	Yes	

Table 8 - 8000—8999 (Continued)

Ref. No.	Part No.	Alt. #1	Alt. #2	Description	ISP	Q'ty	CHP-5012 FS-1050			Remarks
							KMDE	KMA	KMSG	
8A01	5AAVBOT0M009	5AAY3010E+49		BOTTOM CASSETTE KIT	1	Yes	Yes	Yes	Yes	
8A02	5AAVSEPR013	5AAY3010E+50		SEPARATOR KIT	1	Yes	Yes	No	Yes	

Table 9 - Accessory and Packing Matters

Ref. No.	Part No.	Alt. #1	Alt. #2	Description	ISP	Q'ty	CHP-5012 FS-1050			Remarks
							KMDE	KMA	KMSG	
A-002	5AACAC428EEA	5AACAC476EEA	5AACAC479EEA	AC CORD ASSY		1	Yes	Yes	No	No
A-002	5AACAC458BSA	5AACAC480BSA		AC CORD ASSY	KMUK,KMSG,KMHG ONLY	1	No	No	No	Yes
A-002	5AACAC404ASA	5AACAC481ASA		AC CORD ASSY	KMAUS ONLY	1	No	No	No	No
A-002	5AACAC393ULA	5AACAC482ULA		AC CORD ASSY		1	No	No	Yes	No
A-002	5AACAC444JAA	5AACAC483JAA		AC CORD ASSY		1	No	No	No	No
A-003	5AAMDK5P**01			CLEANING KIT C		1	Yes	Yes	Yes	Yes
P-001	5AAK3010E+02			PACKING ASSY	E	1	No	No	No	No
P-001	5AAK3010U+01			PACKING ASSY	U	1	No	No	No	No
P-001	5AAK1000J+02			PACKING ASSY	J	1	No	No	No	No
P-001	5AAKA88E++02			PACKING ASSY	E	1	No	No	No	No
P-001	5AAKA88U++01			PACKING ASSY	U	1	No	No	No	No
P-001	5AAKA88J++01	5AAKA88J++02		PACKING ASSY	J	1	No	No	No	No
P-001	5AAKA88TW+01			PACKING ASSY	TWN	1	No	No	No	No
P-001	5AAKA87CH+02			PACKING ASSY	CHU	1	Yes	No	No	No
P-001	5AAKA94E++02			PACKING ASSY	E	1		No	No	No
P-001	5AAKA94U++02			PACKING ASSY	U	1		No	No	No
P-001	5AAKA94TW+01			PACKING ASSY	TWN	1		No	No	No
P-001	5AAKA94J++02			PACKING ASSY	J	1		No	No	No
P-001	5AAKA93E++02			PACKING ASSY	E	1		Yes	No	Yes
P-001	5AAKA93U++02			PACKING ASSY	U	1		No	Yes	No

Table 10 - Firmware DIMM

Ref. No.	Part No.	Alt. #1	Alt. #2	Description	ISP	Q'ty	CHP-5012 FS-1050			Remarks
							KMDE	KMA	KMSG	
PWBA/D	5AAPRMEG2011BQ			P.W.B. ASSY KP-854 MASK DIMM	1	1	No	No	No	No

Table 10 - Firmware DIMM (Continued)

Ref. No.	Part No.	Alt. #1	Alt. #2	Description	ISP	Q'ty	CHP-5012 FS-1050			Remarks
							KMDE	KMA	KMSG	
PWBA/D	5AAPRMEG2011CQ			P.W.B. ASSY KP-854 MASK DIMM	1	1	No	No	No	No
PWBA/D	5AAPRMEG2011DQ			P.W.B. ASSY KP-854 MASK DIMM	1	1	No	No	No	No
PWBA/D	5AAPRMEG4022HQ			P.W.B. ASSY KP-710 FRASH DIMM	1	1	No	No	No	No
PWBA/D	5AAPRMEG4022PQ			P.W.B. ASSY KP-710 FLASH DIMM	1	1	No	No	No	No
PWBA/D	5AAPRMEG4022QQ			P.W.B. ASSY KP-710 FLASH DIMM	1	1	No	No	No	No
PWBA/D	5AAPRMEG4023AQ			P.W.B. ASSY KP-893 FLASH DIMM	1	1	Yes	No	No	No
PWBA/D	5AAPRMEG4023PQ			P.W.B ASSY KP-893 FLASH DIMM	1	1		Yes	Yes	Yes
PWBA/D	5AAPRMEG4023KQ			P.W.B ASSY KP-893 FLASH DIMM	1	1		No	No	No
YS02/M	5AAXAP037GEA			100PIN DIMM 16M 16M DIMM CHUNGHO ONLY	1	1	Yes	No	No	No

**KYOCERA MITA EUROPE B.V.**

Hoeksteen 40, 2132 MS Hoofddorp,  
The Netherlands

Phone: (020) 6540000

Home page: <http://www.kyoceramita-europe.com>  
Email: [info@kyoceramita-europe.com](mailto:info@kyoceramita-europe.com)

**KYOCERA MITA NEDERLAND B.V.**

Hoeksteen 40, 2132 MS Hoofddorp,  
The Netherlands

Phone: (020) 5877200

**KYOCERA MITA (UK) LIMITED**

8 Beacontree Plaza

Gillette Way,

Reading RG2 0BS UK

Phone: (0118) 931 1500

**KYOCERA MITA ITALIA S.P.A.**

Via Verdi 89/91 20063 Cernusco sul Naviglio  
(Milano) Italy

Phone: 02-92179 1

**S.A. KYOCERA MITA BELGIUM N.V.**

Hermesstraat 8A, 1930 Zaventem, Belgium  
Phone: (02) 7209270

**KYOCERA MITA FRANCE S.A.**

Parc les Algorithmes

SAINT AUBIN

91194 GIF-SUR-YVETTE

France

Phone: (01) 69852600

**KYOCERA MITA ESPAÑA S.A.**

Edificio Mita, Avda. De Manacor Nº2,

Urb. Parque Rozas, Apartado de Correos 76,

28230 Las Rozas, Madrid, Spain

Phone: (91) 631-8392

**KYOCERA MITA FINLAND OY**

Kirvesmiehenkatu 4, 00810 Helsinki,  
Finland

Phone: (09) 478-05200

**KYOCERA MITA (SCHWEIZ) AG**

Höziwiisen, Industriestrasse 28,

8604 Volketswil, Switzerland

Phone: (01) 908 4949

**KYOCERA MITA DEUTSCHLAND GMBH**

Mollsfeld 12 40670 Meerbusch,

Germany

Phone: 02159-918120

**KYOCERA MITA GMBH AUSTRIA**

Eduard-Kittenberger-Gasse 95,

1230, Wien, Austria

Phone: (01) 86338-0

**KYOCERA MITA SVENSKA AB**

Siktgatan 2,

162 50 Vällingby, Sweden

Phone: (08) 4719999

**KYOCERA MITA DANMARK A/S**

Industrivej 11, DK-4632 Bjæverskov,  
Denmark

Phone: 56871100

**KYOCERA MITA PORTUGAL LDA.**

CASCAIS/TOCK-Armazem nº8,

Rua das Físgas, Alcoitão,

2765 Estoril, Portugal

Phone: (21) 4602221

**KYOCERA MITA SOUTH AFRICA**

(PTY) LTD.

UNIT 3, "Kyalami Crescent,"

Kyalami Business Park,

1685 Midrand, South Africa

Phone: (11) 466-3290

**KYOCERA MITA****AMERICA, INC.**

Headquarters:

225 Sand Road, P.O. Box 40008,

Fairfield, New Jersey 07004-0008,

U.S.A.

Phone: (973) 808-8444

**KYOCERA MITA AUSTRALIA PTY.**

LTD.

Level 3, 6-10 Talavera Road, North Ryde,

N.S.W. 2113 Australia

Phone: (02) 9888-9999

**KYOCERA MITA NEW ZEALAND LTD.**

1-3 Parkhead Place,

Albany, Auckland,

New Zealand

Phone: (09) 415-4517

**KYOCERA MITA (THAILAND) CORP.,**

LTD.

9/209 Ratchada-Prachachem Road,

Bang Sue, Bangkok 10800, Thailand

Phone: (02) 586-0320

**KYOCERA MITA SINGAPORE**

PTE LTD.

121 Genting Lane, 3rd Level,

Singapore 349572

Phone: (65) 7418733

**KYOCERA MITA HONG KONG**

LIMITED

11/F., Mita Centre,

552-566, Castle Peak Road,

Tsuen Wan, New Territories,

Hong Kong

Phone: (852) 24297422

**KYOCERA MITA****CORPORATION**

2-28, 1-chome, Tamatsukuri, Chuo-ku

Osaka 540-8585, Japan

Phone: (06) 6764-3555

## **KYOCERA MITA AMERICA, INC.**

### **Headquarters:**

225 Sand Road, P.O. Box 40008  
Fairfield, New Jersey 07004-0008  
TEL : (973) 808-8444  
FAX : (973) 882-6000

### **New York Show Room:**

149 West 51st street,  
New York, NY 10019  
TEL : (212) 554-2679  
FAX : (212) 554-2625

### **Northeastern Region:**

225 Sand Road, P.O. Box 40008  
Fairfield, New Jersey 07004-0008  
TEL : (973) 808-8444  
FAX : (973) 882-4401

### **Midwestern Region:**

201 Hansen Court Suite 119  
Wood Dale, Illinois 60179  
TEL : (630) 238-9982  
FAX : (630) 238-9487

### **Western Region:**

14101 Alton Parkway,  
Irvine, California 92618-7006  
TEL : (949) 457-9000  
FAX : (949) 457-9119

### **Southeastern Region:**

1500 Oakbrook Drive,  
Norcross, Georgia 30093  
TEL : (770) 729-9786  
FAX : (770) 729-9873

### **Southwestern Region:**

2825 West Story Road,  
Irving, Texas 75038-5299  
TEL : (972) 550-8987  
FAX : (972) 570-4704

### **Dallas Parts Distribution Center & National Training Center:**

2825 West Story Road,  
Irving, Texas 75038-5299  
TEL : (972) 659-0055  
FAX : (972) 570-5816

## **KYOCERA MITA CANADA, LTD.**

6120 Kestrel Road, Mississauga,  
Ontario L5T 1S8, Canada  
TEL : (905) 670-4425  
FAX : (905) 670-8116

## **KYOCERA MITA MEXICO, S.A. DE C.V.**

Av. 16 de Septiembre #407  
Col. Santa Inés,  
02130 Azcapotzalco  
México, D.F. Mexico  
TEL : (5) 383-2741  
FAX : (5) 383-7804

©2001 KYOCERA MITA CORPORATION



is a trademark of Kyocera Corporation



is a registered trademark of KYOCERA MITA CORPORATION